

GO WITH A HIGH FLOW

INTRODUCING THE ALL NEW

DEGASi PREP+



The world's first high flow rate, in-line degasser, for organic solvents

Biotech in co-operation with IDEX H65 are proud to announce the world's first in-line, membrane degasser ready to use with aggressive media and

organic solvents, while maintaining flow-rates up to 150ml/min and above.* Available configurations: Stand alone, OEM open frame and 1-4 channels.

* 150ml/min is only a guideline value, the degasser will in many application work with flow rates well above this guideline. The degasser comes with 2-channels as standard, where each channels recommended flow rate is 75 ml/min, connecting these chambers in parallel will allow for a combined flow rate of 150 ml/min.



INNOVATIVE PRODUCTS FOR FLUIDIC SYSTEMS

BIOTECH AB • Rådvägen 300, SE-43992 ONSALA, SWEDEN

TEL +46 (0)300-56 91 80 • info@biotech.se • www.biotech.se

www.biotech.se

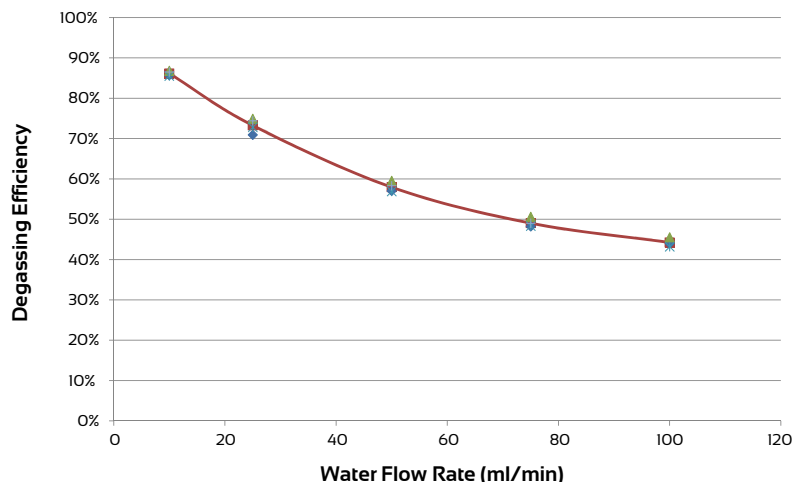
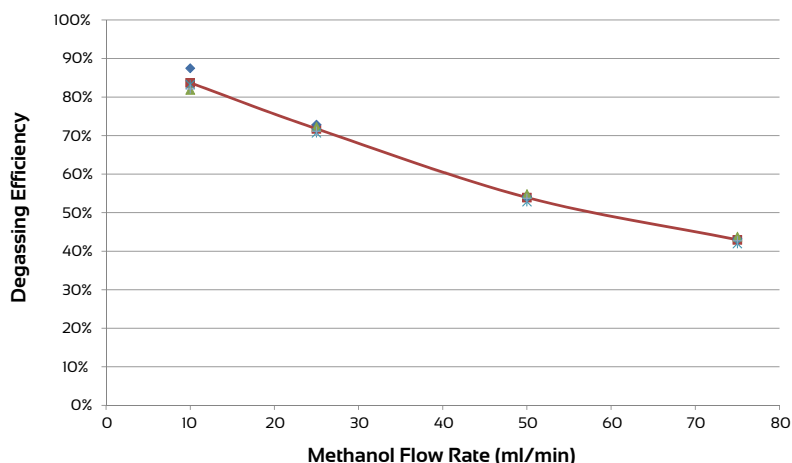
DEGASi Prep+ Degasser enables efficient degassing of many types of liquids at high flow rates, up to 75ml/min, per chamber.



The world's first high flow rate, in-line degasser, for organic solvents

APPLICATIONS

- Preparative HPLC
- Flash Chromatography
- High-throughput applications
- Clinical chemistry analysers
- Dispensing applications
- Ink degassing



GENERAL SPECIFICATIONS

Recommended Flow Rate:

75 mL/min (per channel)

Maximum Channel Pressure:

50 PSI

Wetted Materials:

Systec AF®, Systec AF, FEP, Tefzel, PTFE and Glass-filled PPS

Liquid Connection:

1/4-28 Female Port.

Degassing Efficiency:

See graph to the left

Pressure Drop (kPa/mL/min):

0.0226kPa/ml/min

Dimensions (mm):

L: 260 W: 150 H: 110

POWER REQUIREMENT

24V Power supply Included

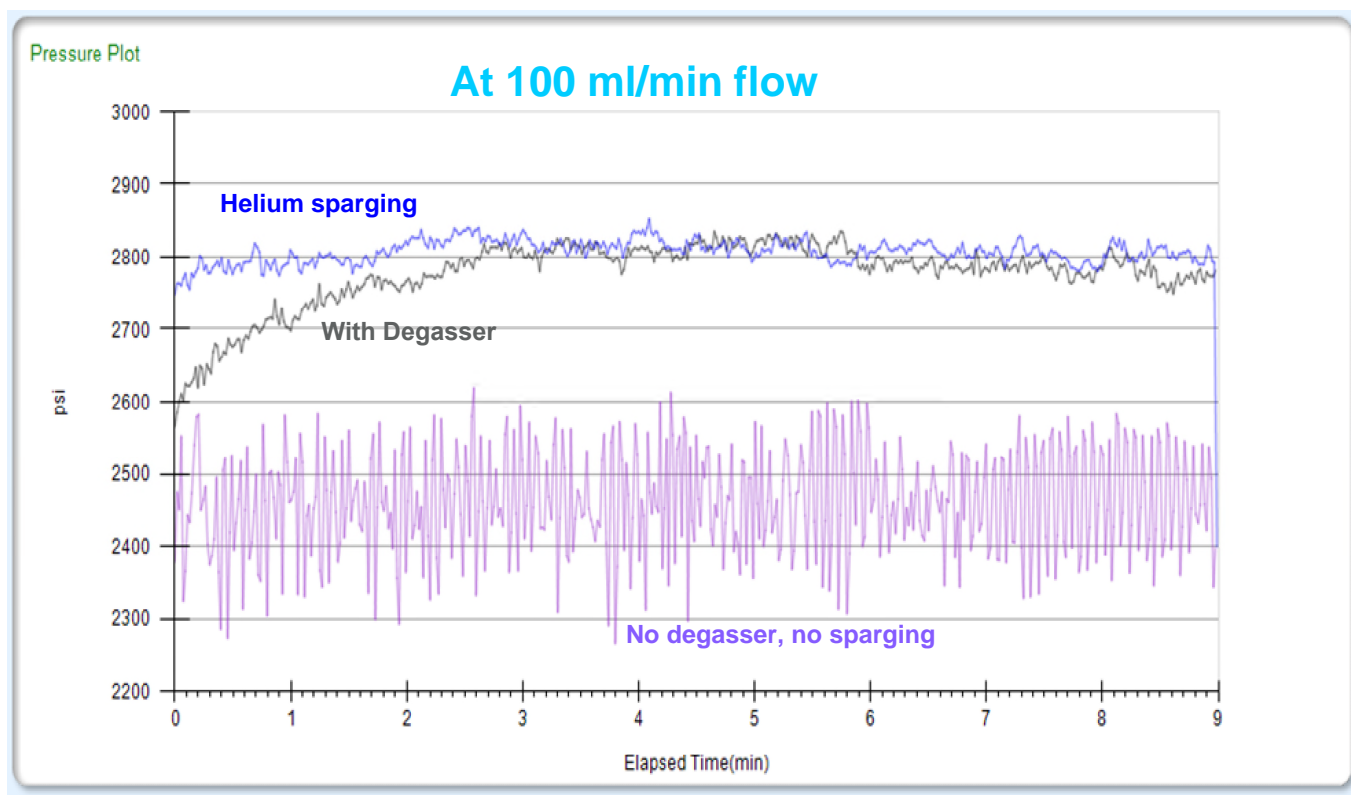
Required input to power supply:

100-240V 50/60Hz

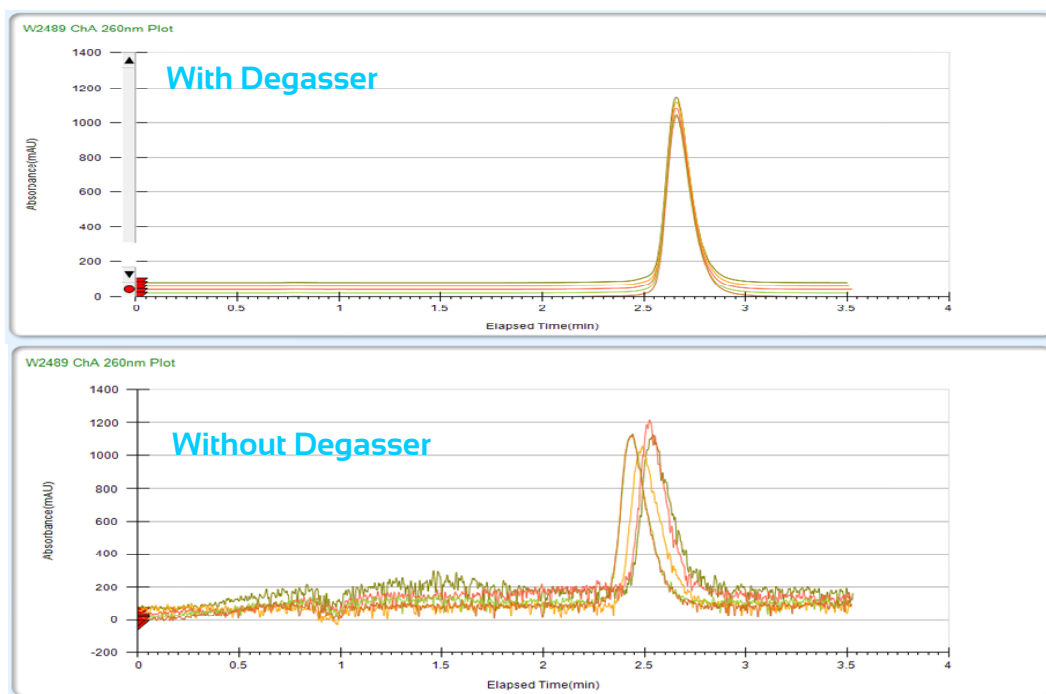
Part Number	Number of Channels	Internal Volume
0001-0120	1	20 ml
0001-0220	2	20 ml
0001-0420	4	20 ml

The listed part numbers are for our DEGASi series of Stand-Alone degassers, OEM configurations with customizable options are also available, please contact us for more information.

Liquid Pump Pressure Stability



Retention time test



5 sample of 120ul of 100ppm methyl paraben are injected for each test. Waters Prep LC150 with 2545 quaternary gradient-module and 2489 UV/VIS detector is used. Column is symmetry C18 Prep column, 100A, 5um, 19mmx50mm 10ml/min Isocratic flow (MeOH:H2O)



View from our office windows

BIOTECH

Biotech Sweden is a company highly specialized in chromatography accessories and consumables. Biotech is located on the Swedish Westcoast – south of Gothenburg – at the beautiful Onsala peninsula, covering 15.000 sq.m. land and 700 sq.m. production and office area.

A SIMPLE PHILOSOPHY...

We at Biotech believe that value is not "the lowest price" – our customers are the reason we exist – our customers always come first. We have not lost sight where we come from and therefore we try harder to be your partner, we're not satisfied unless you are satisfied.

Thank you for your business. I know we'll continue to grow and prosper together.

Affiliated companies: **Biotech USA LLC**
281 County Road C2W,
Roseville MN 55113, USA
bmathieu@biotechusa.us
www.biotechusa.us

BioNik Inc.
3397-19 Obuchi
Fuji, Shizuoka 417-0801
Japan
TEL +81-545-38-9125
info@bionikinc.com
www.bionikinc.com

We accept Visa® and MasterCard®
- no minimum order.



Biotech AB.
Råövägen 300,
SE-439 23 Onsala
Sweden.
Telephone +46 (0)300-56 91 80.
info@biotech.se – www.biotech.se

